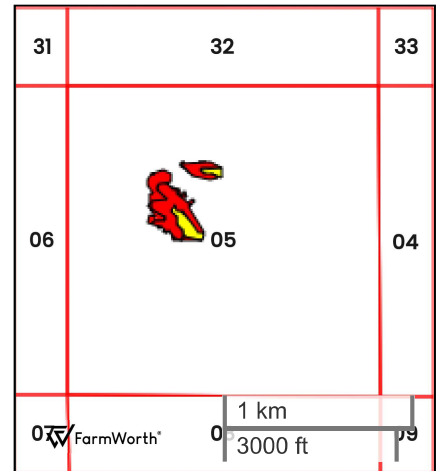
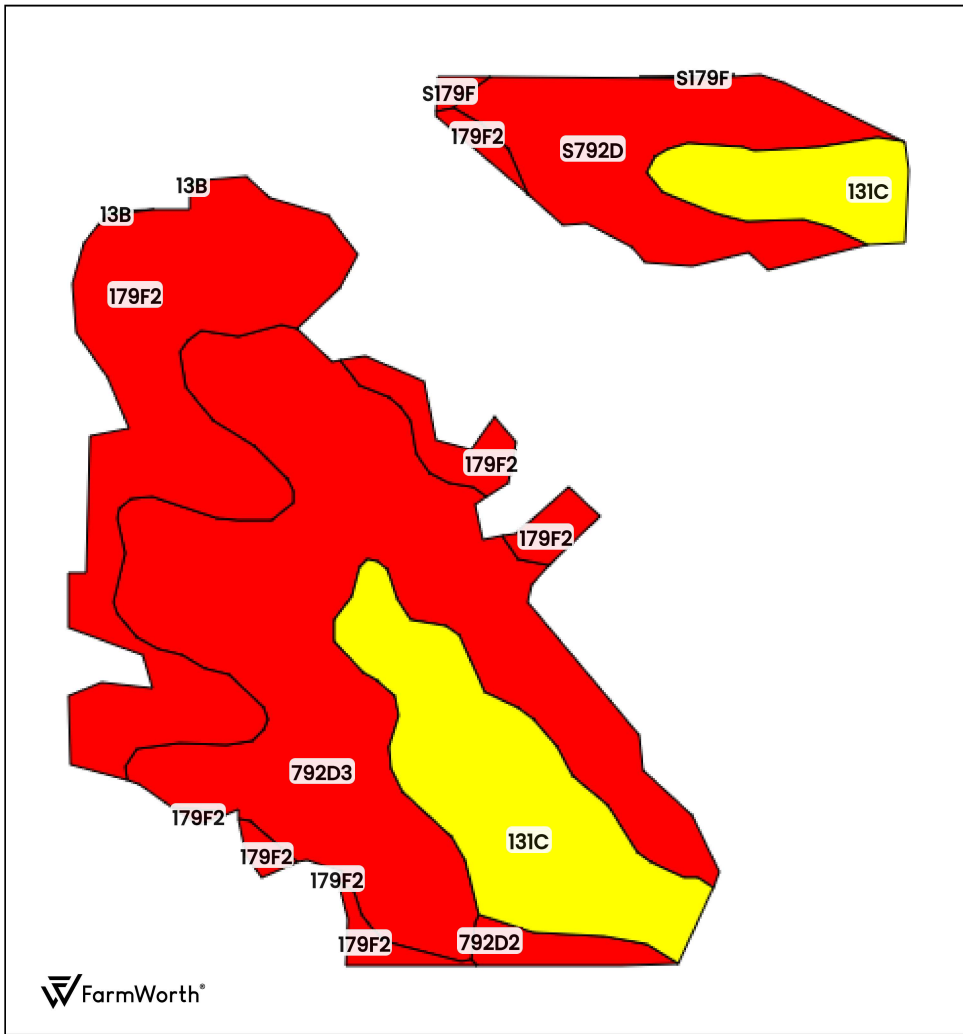




JUDITH R. ROMINE ESTATE (40.35 AC TOTAL, 19.46 AC TILLABLE)

TILLABLE SOILS



County: **Clarke County, IA**
 Location: **05-73N-24W**
 Township: **Liberty**
 Acres: **19.46**
 Date: **04/14/2026**



FarmWorth, LLC makes no warranties, express or implied, regarding the accuracy of any information provided through FarmWorth.com. User is solely responsible for independently verifying all information prior to use and waives any claims against FarmWorth, LLC arising from inaccuracies in such information.

Code	Description	Acres	% of field	IA CSR2	Overall NCCPI	Soil Class (Irr)	Soil Class (Non-Irr)	Drainage Class
792D3	Armstrong clay loam, 9 to 14 percent slopes, severely eroded	7.82	40.18 %	7	49	-	6	Somewhat poorly drained
179F2	Gara clay loam, 18 to 25 percent slopes, moderately eroded	4.96	25.49 %	11	50	-	4	Well drained
131C	Pershing silt loam, 5 to 9 percent slopes	3.91	20.09 %	65	73	-	3	Somewhat poorly drained
S792D	Armstrong loam, 9 to 14 percent slopes	2.37	12.18 %	10	69	-	4	Somewhat poorly drained
792D2	Armstrong clay loam, 9 to 14 percent slopes, moderately eroded	0.32	1.64 %	5	58	-	4	Somewhat poorly drained
S179F	Gara loam, 18 to 25 percent slopes	0.07	0.36 %	19	54	-	6	Well drained
13B	Olmitz-Zook-Colo complex, 0 to 5 percent slopes	0.01	0.05 %	77	80	-	2	Poorly drained
Average:				20.1	56.7			

IA has updated the CSR values for each county to CSR2.
 Soils data provided by USDA and NRCS.